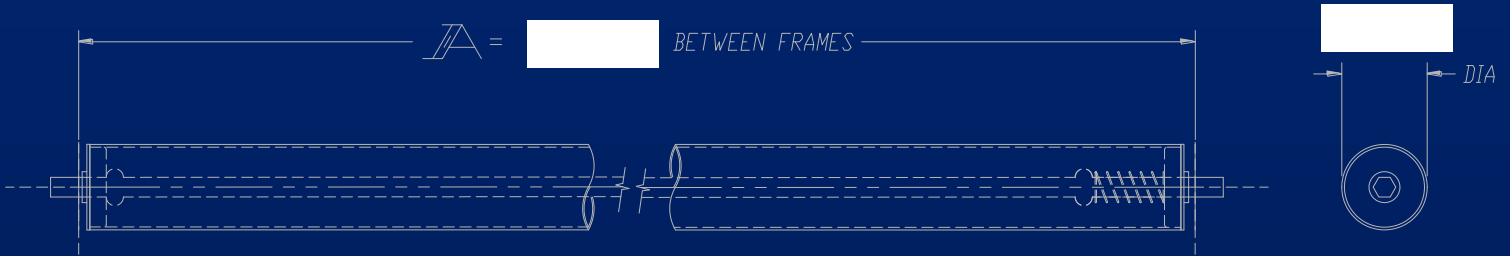


## Gravity Conveyor Rollers



Quantity:

**When Ordering Please Specify the Following:**

- Part Number
- Between Frame Dimensions
- Bearing Type

**Options:**

- Zinc Plated Rollers & Axles
- Polyurethane Roller Covering
- Custom Configurations

**Example:** 251S-24.5-MFC-2280-11H

Part Number:

Between Frame Dimension:

Bearing type:

**Alba Manufacturing, Inc.**

8950 Seward Road

Fairfield, Ohio 45011

Phone: (866) 252-2634

Fax: (513) 874-9476

Web: WWW.ALBAMFG.COM



# Gravity Conveyor Rollers

Part No.	Description	Available Bearings
196S	1.9" diameter x 16 ga wall, 7/16" hex axles, spring retained	# 1005, 130 lbs. / bearing
192S	1.9" diameter x 12 ga wall, 7/16" hex axles, spring retained	# 1690, 130 lbs. / bearing # MFC-1710-7H, 252 lbs. / bearing # FR-170707HDS, 428 lbs. / bearing
199S	1.9" diameter x 9 ga wall, 7/16" hex axles, spring retained	# MFC-1710-7H, 252 lbs. / bearing # FR-1707-7HDS, 428 lbs. / bearing
254S	2-1/2" diameter x 14 ga wall, 7/16" hex axles, spring retained	# 1500/3135, 150 lbs. / bearing
251S	2-1/2" diameter x 11 ga wall, 11/16" hex axles, spring retained	# MFC-2280-11H, 425 lbs. / bearing # FR-2265-11HDS, 1,050 lbs. / bearing # 33W9—ABEC-1, 1,740 lbs. / bearing
297S	2-9/16" diameter x 7 ga wall, 11/16" hex axles, spring retained	# MFC-2280-11H, 425 lbs. / bearing # FR-2265-11HDS, 1,050 lbs. / bearing # 0973600, 1,605 lbs. / bearing # 33W9—ABEC-1, 1,740 lbs. / bearing
3509S	3-1/2" diameter x 9 ga wall, 11/16" hex axles, spring retained	# 2512/3500, 290 lbs. / bearing
3530S	3-1/2" diameter x .300 wall, 1-1/16" hex axles, pin retained	# 1083-2A, 1,250 lbs. / bearing # HDCB0611, 4,300 lbs. / bearing
425438S	4-1/4" diameter x 7/16" wall, 1-1/4" hex axles, pin retained	# B1101-2, 2,250 lbs. / bearing
50750S	5" diameter x 3/4" wall, 1-1/2" hex axle, pin retained	# B1120-2, 3,750 lbs. / bearing



**Alba Manufacturing, Inc.**

8950 Seward Road

Fairfield, Ohio 45011

Phone: (866) 252-2634

Fax: (513) 874-9476

Web: WWW.ALBAMFG.COM

**MOVE IT**

on Conveyors by ●●●

**Alba**

MANUFACTURING, INC.